

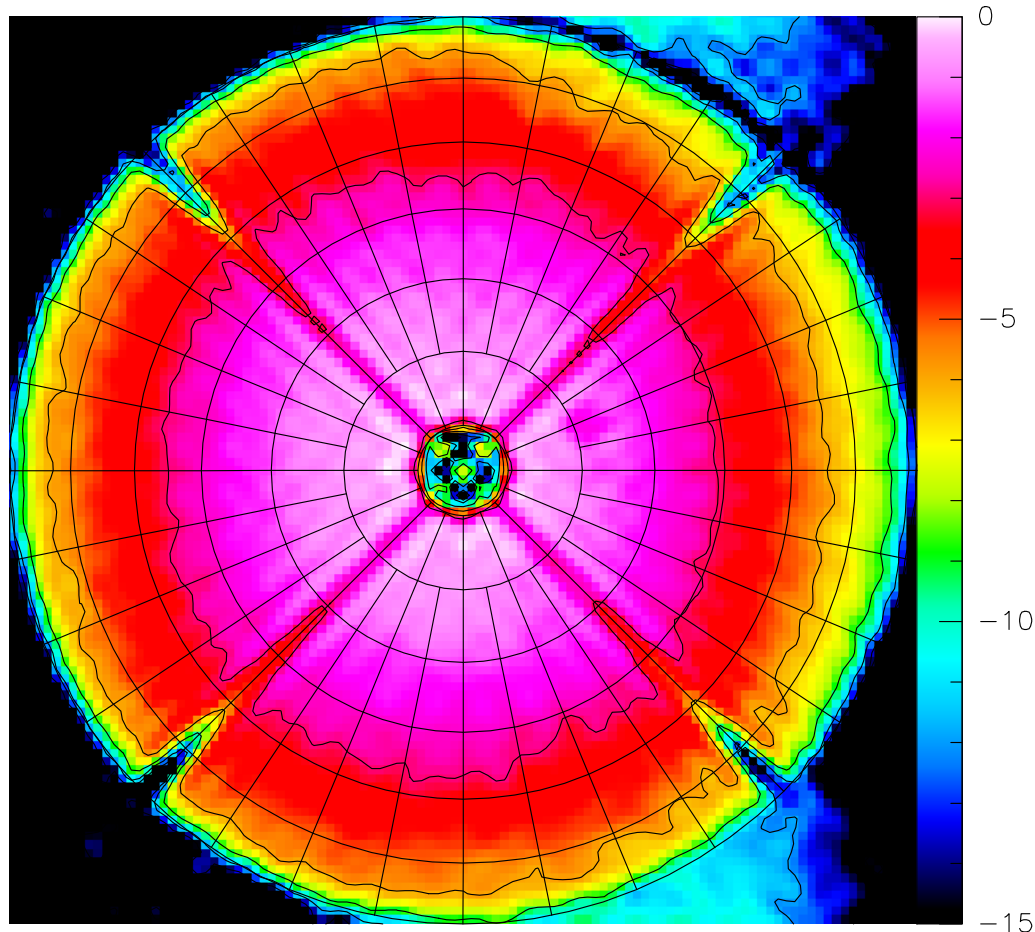
30-sep-2019-holo-r1

RF: Fr.(B) CLIC - 19-NOV-2019 10:01:36 - pietu@pietu.iram.fr - Ant 10 - N05N13W12W09E10E04W05N02N09
 Am: Rel.(B) 3C454.3 9D scans 6011 to 6085 30-SEP-2019 23:23UT El: 56.00
 Ph: Rel.(B)

rms Pha. Edge taper = 19.05x 16.49 dB - offset X= -0.39 Y= -0.13 m
 Focus offsets (X,Y,Z) = -0.71 -1.40 0.12 mm; Astigmatism = 20.4 μ m (52.0deg.)
 Phase rms (unweighted)= 0.101 (weighted)= 0.097 radians
 Surface rms (unweighted)= 33.63 - (weighted)= 31.09 μ m
 η_A (82.000 GHz) = 0.737; η_A (230.0 GHz) = 0.692; η_A (345.0 GHz) = 0.632
 S/T(82.000 GHz)= 21.179 Jy/K; S/T(230GHz)= 22.573 Jy/K; S/T(345 GHz)= 24.720 Jy/K
 η_I =0.744 $-\eta_S$ =0.862 $-\eta_P$ (82.000 GHz)=0.991 $-\eta_P$ (230 GHz)=0.930 $-\eta_P$ (345 GHz)=0.849
 Rms/ring: 27.6 29.3 26.5 33.4 31.0 37.8

01-09 4.82
 02-09 3.75
 03-09 14.35
 04-09 13.36
 05-09 10.87
 06-09 10.26
 07-09 11.02
 08-09 8.17

Amplitude (back view)
 -15.000 to 0.000 by 3.000



Normal errors (back view)
 -500.000 to 500.000 by 100.000

